

Registration Schedules



MARY WALKER SCHOOL DISTRICT, NO. 207

Back to School Newsletter School Starts Tuesday, September 1st

Pre-School: MARY WALKER PRE-SCHOOL will again be offered to youngsters ages 3 through 5 who have identified disabilities. Please call the Elementary School Office at 258-7357 if you have questions. Testing will begin when school starts.

Kindergarten - 8th Grade: Registration for new and returning students in SPRINGDALE ELEMENTARY/MIDDLE SCHOOL'S Kindergarten through 8th Grade will begin August 17th from 8:00 a.m. to 3:00 p.m. in the Elementary/Middle School office.

Students registering for kindergarten must be five years old on or before August 31, 2009 and the parent or legal guardian will need to bring current immunization information and a birth certificate or other legal proof of age for each new student. Returning students must update registration information and immunization information. Any student entering 6th grade is required by law to have a second MMR immunization in addition to the Varicella vaccine and will need to bring proof of such immunizations.

Grades 9-12: Mary Walker High School will be hosting student registration for fall classes (2009-2010) for ALL students on August 19th, 20th, and 21st from 10:00 a.m. until 3:00 p.m. Students who do not register on these dates will not have classes on the first day of school. A parent is required to attend with the student to give approval for the new classes.

To view a **draft** copy of the classes and schedule for the fall semester, please see page 4 of this newsletter. Please note that the schedule is subject to change.

Alternative School: Registration for MARY WALKER'S ALTERNATIVE SCHOOL will begin August 19th from 10:00 a.m. until 3:00 p.m. The Alternative School is designed to provide a high school diploma to anyone under the age of 21 who cannot, for various reasons, complete the normal high school program, and will start September 7th. Call the High School Office at 258-4533 for more information and an appointment with our Alternative School instructor.

Inside this issue:

News from Mrs. Henjum FCCLA Nationals	2
Teachers 07-08	3
High School Class Schedule (Draft)	4
Transportation Information Attendance and Transfers	5
News from the Nurse	6
Home School & General Information	7
Special Services	8
School Year Calendar	9
Sports Schedules	10-12
Math Assessment Grant Information	13
Free & Reduced Lunch Letter High School Dress Code	14-15

Mark Your Calendar

August

- 17th ~ K-8 School Registration Begins
- 19th - 21st ~ High School Registration

September

- 1st ~ 1st Day of School
- 7th - Labor Day ~ No School

October

- 13th ~ Consortium Day — No School

November

- 3rd ~ End of 1st Quarter
- 4th-6th ~ Early Release for Conferences
- 11th ~ Veteran's Day — No School

News from Mrs. Henjum, PreK-8 Principal

Welcome Back

As summer comes to a close, everyone should be eager to get back to school. Mark your calendars for September 1st!!!! Make sure the alarms are set and that you and your child are ready for another GREAT year at Springdale Elementary/Middle School. If your child isn't registered yet, please stop by the office and pick up a registration form. The office will officially open on August 17th at 8:00.

Paint Offers New Look

As the new school year opens, the Springdale Elementary/Middle School students will be greeted by a newly painted building. Once the staff and students left for the summer, volunteers poured into the building to help give the building a facelift. Within two days the building was glowing!! The new color brings in more light and offers a warm feel throughout the hallways. Make sure you stop by to check out the amazing work!! A huge "Thank You"

to all of the individuals who donated their time!!!

Kindergarten Registration

If you have a child who needs to register for kindergarten, please stop by our office on the 17th of August for a new student packet. All kindergarten students will start on September 1st. We do have full day kindergarten, so make sure your child has a snack in his or her backpack for the afternoon hours. Current health records will be required before your child can enroll and/or attend.

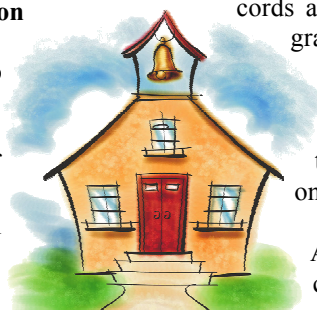
Immunization Requirements

The state has changed their health requirements for some students. Please view the *News from the Nurse* article on page 6 for more information or check with your local doctor in regards to new immunizations needed prior to

going to school. All shot records will need to be updated and a copy will be kept in our office. If your child's records are not up-to-date, a 2 week grace period will be given then the child will be sent home until their records are current. If you have any questions, please call the office on August 17th.

Any student who takes medication or has an emergency care plan due to allergies, asthma, etc. will need to have an updated plan on file before the child can attend. This precaution is for the safety of the child. Without current information (the school year dating 2009-10) provided by a doctor, the school will not be able to have the child on campus until all medical records are updated. Again, this is for the safety of the child and for school employees to better assist a child if and when needed.

See you soon!
Mrs. Henjum



MWHS Students Recognized at FCCLA Nationals

Nashville, TN. – Mary Walker FCCLA recently participated in STAR Events (Students Taking Action with Recognition) at Family, Career and Community Leaders of America's (FCCLA) 2009 National Leadership Conference.

Tara Keenan and Madeline Swidergal, graduates with the class of 2009, received a Gold medal in Applied Technology for the third year. Applied Technology is a team event which recognizes participants who develop a project using technology that addresses a concern related to Family and Consumer Sciences and/or related occupations and integrates and applies content from academic subjects. Their project was titled Texting...Your Obituary.

Melodie Adams, Ledia Martushoff and

Tanya Martushoff received a Gold Medal in Occupational Focus on Children along with Kiriakia Afonin and Carrie Martushoff receiving a Gold Medal in Junior Focus on Children category. Focus on Children, a team event, recognizes participants who use Family and Consumer Sciences skills to plan and conduct a child development project that has a positive impact on children and the community. The project titles were Environmental: Get Crazy about the Earth for the occupational group and Stranger Danger for the junior group.

Damian Howder and Karinne Smith, who graduated this spring, received a Gold Metal with a perfect score of 100 percent in Occupational Illustrated Talk. Illustrated Talk, a team event,

recognizes participants who make an oral presentation about issues concerning Family and Consumer Sciences and/or related occupations. Their project was titled How Crowded is Your Bed?

Medals were presented at a recognition session honoring all participants at the Gaylord Opryland Convention Center on Thursday, July 16. More than 5,300 members, advisers, alumni, and guests from across the nation attended the meeting. Nearly 3,000 students advanced from the local, regional, and state level of STAR Events to the national level. The competition was intense and our local students represented our state and chapter well.

Lunches at School

The Mary Walker School District follows the nutritional guidelines set forth by Federal and State agencies. The cafeteria supervisor, Shauna Oakes, will continue to work diligently to provide students with nutritious and delicious breakfast and lunch offerings.

The monthly menus will continue to be available at the school offices so that parents can plan their child (ren)'s meal choices. The current month's lunch offerings can also be found online by visiting our website at www.marywalker.org.

Be sure to notify the school nurse and the cafeteria supervisor if your child suffers from a food allergy.

If you have any questions, please feel free to contact the MWSD cafeteria at 258-4731.

Menu for the first day of school:

Breakfast: Waffles w/Syrup
Sausage
Chilled Fruit
Juice or Milk

Lunch: Corn Dog
Baked Beans
Fresh Veggies
Watermelon

FERPA Info

The FERPA Notification and other legal information and notices can be found on our website. Please visit marywalker.org and go to *Our District, General Information* from the top menu. If you have any questions, please contact the Mary Walker School District at 509-258-4534.

Teachers For the 09-10 School Year

Elementary School

Preschool
Kindergarten
First Grade
First/Second Grade
Second Grade
Third Grade
Third Grade
Fourth Grade
Fifth Grade
K-5 Physical Education
Art
Speech
K-6 Resource Room

Kim Dixon, Dani Schurger, &
Lisa Bertie
Don Gilmore
Wendy Peone
Margie Walters
Melissa Talley
Darci Zollman
Nina Welch
Nancy Howard
Becky Gearhart
Hugh Franks
Pam Hegel (grades 3-5)
Nancy Danner
Carol Kennedy &
Mary Sulgrove

Middle School

6th, 7th & 8th Grade Language Arts
7th/8th Grade Social Studies
6th, 7th & 8th Grade Mathematics
6th, 7th & 8th Grade Science
6th Language Arts, Social Studies, Math
6th, 7th & 8th Grade PE
6th, 7th & 8th Grade Art
Special Services

Debbie Solum
Dwayne Watts
Jo Moss
Vince Moeller
Leslie Sulgrove
Hugh Franks & Dwayne Watts
Pam Hegel
Toni Thompson &
Mary Sulgrove

High School

Alt. School/Spanish/English/Drama
Art
Business Ed
Counselor
Mathematics & AP Math
English & AP English
English & Math
Social Studies & History
Home & Family Life
Physical Education
Science & AP Science
HS Special Services
Small Engine Repair
Vocation Agriculture

Gail Shelton
Pam Hegel
Mike Bettinson
Jerry Dyar
Mic Kohlstedt
Amy Hansen
Elisabeth Motley
Kyle Dodge
Jane Laaker
Mark Edwards
Dennis Kiefer
Lonnie Rickey
Dave Howard
Matt Gines

Information available as of July 31, 2009
Please note that teacher assignments are subject to change.

Mary Walker High School Schedule 2008-2009

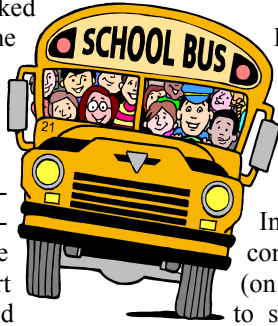
Monday Late Start ***		9:25-10:10	10:15-11:05	11:10-12:00		12:00-12:30	12:35-1:25	1:30-2:20	2:25-3:10
	1	2	3	4	Adv. Wed/Thr	Lunch	5	6	7 everyday
	Tues. & Fri. 8:25-9:15	9:20-10:10	10:15-11:05	11:10-12:00			12:35-1:25	1:30-2:20	2:25-3:10
	Wed. & Thurs. Wed. 8:25-9:50	Thr. 8:25-9:50	Wed. 9:55-11:20	Thr. 9:55-11:20	11:25-12:00		Wed. 12:35-2:00	Thr. 12:35-2:00	2:05-3:10
1st Semester	Bettinson	Prep	Web Design <i>Business Law</i>	Applied Math <i>Business Law</i> <i>Comp Apps</i>	Compu Apps 1 (9th) <i>Business Law</i>		Publications Compu Apps 1 Compu Apps 2 <i>Business Law</i>	Accounting 1 or 2 Digital Photo Compu Apps 2 <i>Business Law</i>	Computer Repair <i>Business Law</i>
	Dodge	Weights	AP US History	World Cultu. 1st Sem. AP Psych 2nd Sem.	US History		AVID 9th Grade	Senior Gov't	Prep
	Edwards							Foundation Math	Athletic Fitness-PE
	Gines	Plant Science 10th	Metals 1 & 2	Prep	Communications 9th grade		Natural Resources Science	PE	Metals 1 & 2
	Hansen	AP Lit	Lang. Arts 2	Lang. Arts 2	Prep		Transitions 9th grade	AP US Gov't and Politics	AP Study Hall
	Holt		Graphic Art Design	Art	Art				
	Howard						Auto Maint.	Power EquipTech & Sports	
	Kiefer	Science 9	Science 9	Physics	Prep		Advanced Biology	Biology 10	PE
	Kohlstedt	Pre-Calculus	Math 4	Algebra	Prep		Geometry	Geometry	Math 3
	Laaker	Foods	Consum Ed. 1st Sem Foods 2nd Sem	Child Development & Mentoring 11-12	ConsumEd. 1st Sem PerChoices 2ndSem		Foods	Prep	Health
	Motley	Lang. Arts 1	Lang. Arts 1	Algebra	Prep		9th Grade Guided Study- 12th Grade Tutors	Lang. Arts 3	AVID 10th & 11th Grade
	Rickey	Special Services	Special Services	Prep	Special Services		Special Services	Weights	Special Services
	Shelton	Spanish 1	Lang. Arts 4	Spanish 2	Drama		Prep	Alternative Educ.	Alternative Educ.

***Monday late start and each week a rotating class schedule

Please note that this is a draft only and is subject to change!

Transportation Information

Bus scheduling will remain the same as last year. On the morning of September 1st, students will be picked up where they boarded the bus last year. Families affected by route changes will be notified directly by the District Transportation Department. Please remember that every Monday starting September 14th, there will be a one hour late start unless otherwise noted



(please check the website at www.marywalker.org for updates).

If you ever have any concerns regarding busing, please feel free to contact the district's Transportation Supervisor, Steve Thams, at 258-9041.

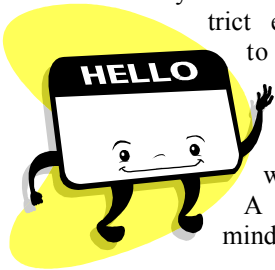
In the event of severe weather conditions, buses may run late or (on rare occasions) not at all due to school closure. For schedule

changes during bad weather, please tune into one of the following radio stations for announcements district wide:

- KZZU 93 FM
- KDRK 93.7 FM
- KXLY 902 AM/99.9 FM
- KIX 96 FM
- KEYF 101.1 FM
- KISS 98.9 FM
- ABC, CBS, and NBC on the TV

Please Check In

The administration and staff of the Mary Walker School District encourage you to visit out schools to see all the fun and exciting things we are doing. A gentle reminder, however,



that all visitor's are required to check in at the office when entering any of the district school buildings. This is a safety precaution for the protection of students and staff. You may be asked to wear a visitor's pass to confirm to school staff that you have indeed checked in. Your cooperation is appreciated as we all work together to assure a safe environment for our students.

Student Transfers

Students transferring into, or out of, the school district must apply before the start of school. Transfers are good for one year only, so a new application must be completed each year.

"By law, Washington schools cannot accept students who are not residents, nor transfer students who are not resi-

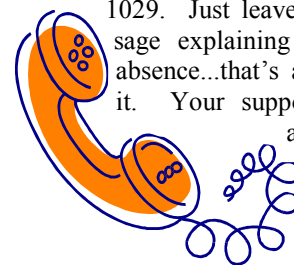
dents, without necessary paperwork being completed," according to Mary Walker School District No. 207 Superintendent Kevin Jacka. "Parents should file these papers as soon as possible."

Information on transfers can be obtained by calling, 258-4534.

Student Attendance

Regular school attendance is vital to your child's academic success. But what about those times when your child is unable to attend due to health reasons, doctor or dentist appointments or family emergencies? The schools ask that you assist them by please calling the District's Absentee Line to excuse your child's absence. The main concern is for your child's safety and by communicating with the school, everyone can be assured that your child is accounted for and safe.

So, the next time your child is not able to attend school, please take a moment to call the 24 hour absentee line at 323-1029. Just leave a brief message explaining your child's absence...that's all there is to it. Your support is greatly appreciated!



We're on the Web



The Mary Walker School District website provides all the latest information on sports, lunch menus, upcoming events and much, much more. Be sure to visit us soon at...

www.marywalker.org

Parents' Right to Know

Springdale Elementary/Middle School and Mary Walker High School are school wide Title I schools. Parents of children in Title I schools may request information about the qualifications of their child's teachers. The following information may be provided to parents who request it:

- State qualification and licensing requirements for grade levels and subject areas

- Emergency or other provisional status where licensing criteria is waived
- Baccalaureate degree major and any other graduate certification or degree
- In addition, if services are provided to the child by a paraeducator, parents may be informed if he/she is 'Highly Qualified' according to NCLB regulation.

Homeless and Migrant Worker Students

Mary Walker School District, and all school district in Stevens County, will have programs to assist homeless and migrant worker students and their families. The program's purpose is to help these students to be successful in school and reduce the barriers to enrollment in school.

Homeless students include children living in homeless shelters, any student

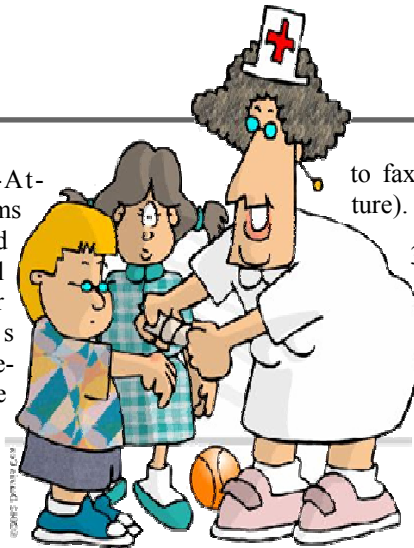
who does not have a steady place of residence or lives in a temporary residence, those living in inadequate housing, and/or students who are runaways or throwaways. Migrant workers are defined as any students who travels out of the area to work. If you are interested in receiving more information about this program, please contact the Springdale Elementary/Mid School at 258-7357.

News from the Nurse

We hope you all had a wonderful summer. Here are a few things to remember to do before you return to school:

1. Washington State immunization law requires pre-school, kindergarten, and 1st grade students to have 2 doses of the Varacilla vaccine (CHICKEN POX), unless exempt for medical, personal or religious reasons. Parent reported history of the disease is no longer valid for these students. 2nd, 3rd, and 6th grade students must have 1 dose of this vaccine or have had the disease. Please update your child immunization record during the first week of school. State law requires that children with immunization records not up to date be excluded from school.

2. Medicine-At-School forms are only good for one school year. If your child has Asthma, Diabetes, or severe allergies, you need to have a new Medicine-At-School form completed by your doctor prior to starting school. You may pick up the forms from the school office. This would also include all children who need to take over-the-counter medication at school. (If the form is filled out and signed by the parent, the nurses would be happy



to fax it to your doctor for a signature).

3. If your child has an inhaler, epi-pen or diabetic medication, make sure they have it at school the first day. They will be excluded from activities such as field trips and sent home if the medication is not at school.

As always, if your child has developed any new medical conditions over the summer break please call the office prior to the start of the school year so we can have everything in order prior to your child starting school.

**Washington is a
"No-Shots - No School" state!**

BOARD OF DIRECTORS

District 1 - Ken Canfield, *Chairperson*

District 2 - Robert Pierce

District 3 - Kim Stricker

District 4 - Justyn Turner

District 5 - Jan Podris

ADMINISTRATORS

Kevin Jacka, *Superintendent*

Cheryl Henjum, *K-8 Principal*

Matt Cobb, *HS Principal*

SCHOOLS

ELEMENTARY & MIDDLE SCHOOL

Tammy Ward, *Secretary*

Phone: 258-7357

MARY WALKER HIGH SCHOOL

Cindy Melville, *Secretary*

Shamalee Gray, *Student Records*

Phone: 258-4533

DISTRICT OFFICE

John Boyle, *Business Manager*

Cleo Miller, *District Secretary*

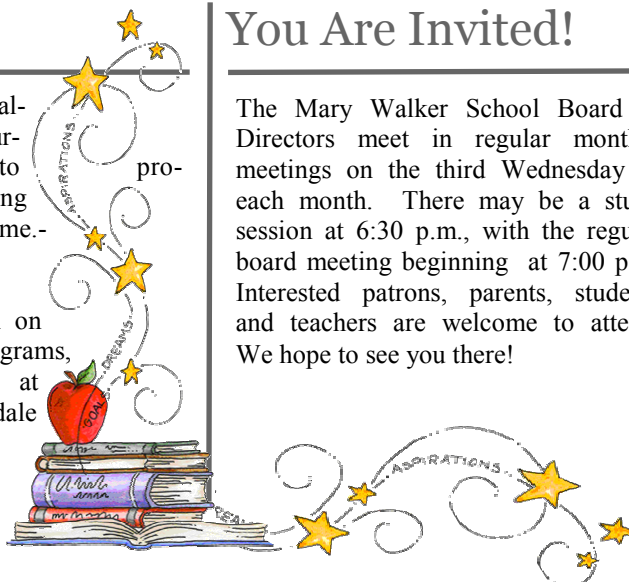
Phone: 258-4534

Home-Based Alternative Learning

Mary Walker School District No. 207 currently offers two home-based ALE programs, Mary Walker Parent Partnership Program (MWPPP) and Springdale Academy, which are K-12th resource options designed by local parents with Mary Walker School District #207 to supplement and enrich the home-based school experience. These programs recognize the parent as the primary teacher, working with enrolled families to provide resources and workshops that may not be readily accessible from the home. These workshops

will often utilize the talents of local or surrounding area experts to provide stimulating learning experiences for the home-based ALE students.

For more information on either of these programs, please call MWPPP at 258-7342 or Springdale Academy at 937-2224.



You Are Invited!

The Mary Walker School Board of Directors meet in regular monthly meetings on the third Wednesday of each month. There may be a study session at 6:30 p.m., with the regular board meeting beginning at 7:00 p.m. Interested patrons, parents, students and teachers are welcome to attend. We hope to see you there!

Special Forms for Home-School Parents

In compliance with state law, parents providing home-based instruction to their children must file a statement with their local school district. Forms are available at the District Office.

The statement must be filed by September 15, 2009 or within two weeks of the beginning of the school quarter, trimester or semester. It should include the name and grade of the child being home schooled and whether or not the home-based instruction will be supervised by someone with a teaching certificate. Parents living in this school district can file the statement with the District Office weekdays between 8:00 a.m. and 4:00 p.m.

Childfind

Mary Walker School District No. 207 provides many programs at no cost. We offer special programs such as speech therapy, physical therapy, Title I/LAP, Special Education, academic programs and preschool classes to children 3 years and older. Developmental screenings and/or comprehensive assessments for children who are suspected of having a disability are also available at no cost for persons between the ages of birth through 21. For further information, please contact Special Services at 258-7357.

Non-Discrimination Policy

The Mary Walker School District complies with all Federal and State rules and regulations and does not discriminate on the basis of race, color, national origin, sex or disability. This holds true for all students who are interested in participation in educational programs and/or extracurricular school activities. Inquiries regarding compliance and/or grievance procedures may be directed to the School District's Title IX/RCW28A.640 Officer and/or Section 504/ADA Coordinator, Cheryl Henjum at 258-7357.

Drug Free Workplace

Mary Walker School District No. 207 recognizes its responsibility to maintain a drug-free workplace. In recognition of that responsibility, no employee engaged in work shall unlawfully manufacture, distribute, dispense, possess or use on or in any Mary Walker building, premises, assigned work location, vehicle, or activity, any narcotic drug, hallucinogenic drug, amphetamine, barbiturate, marijuana, any controlled substance or alcohol.

As a condition of employment, each employee shall abide by the terms of this policy respecting a drug-free workplace. An employee who violates the terms of this policy may be suspended, discharged or non-renewed in accordance with the provisions of board policy and state law.

An employee may be required to satisfactorily complete a drug rehabilitation or treatment program approved by the superintendent or designee at the employee's expense. Nothing in this policy shall be construed to guarantee reinstatement of any employee who violates this policy, nor does Mary Walker School District incur any financial obligation for treatment or rehabilitation ordered as a condition of reinstatement.

Special Education Parent Information Table

Mary Walker School District's special education department, as part of the district's "Special Education Policies and Procedures," hosts a "Parent Information" table now located in the elementary school building, just inside room number 74. It used to be located just outside the special education director's office, room number 79.

As before, and according to law, "Any application and any required policies, procedures, evaluations, plans, and reports will be made readily available to parents and other members of the general public through the district's special education and superintendent offices."

All parents are invited to review information related to the identification of students with disabilities in need of special education. Information is in-

cluded on specific disabilities, on agency and parent support groups, and on trainings available to parents and educators. Also included for your review are Mary Walker's Special Education Policy and Procedures, Washington State's Rules for the Provision of Special Education to Special Education Students (Chapter 392-172 WAC), Notice of Procedural Safeguards for Special Education Students and Their Families, Consolidated Program Review from the Office of the Superintendent of Public Instruction (2001), and Federal Fund Grant Applications for Special Education IDEA-B and Section 619 Funding.

Also, parents may review information regarding, "The Family Educational Rights and Privacy Act (FERPA)" and "The Health Insurance Portability and Accountability Act (HIPAA)" as they

relate to student records.

The special education department embraces an open door, "Public Participation" policy (page 24 of the Special Education Policies and Procedures manual), and encourages parents, at anytime, to provide input and planning ideas to the special education director with the goal of improving the effectiveness of the special education program.

Any parent can set up a meeting with the special education director, Scott Schell, at 258-7357, to refer any student for special education evaluation, or to have any question answered, or to review any application or procedure, or to provide an opinion or suggestion as to how to improve the effectiveness of the special education program.

Special Services to Include Infants and Toddlers

Beginning in September of 2009, Mary Walker, along with all other districts in the state, will participate in early intervention services for infants and toddlers who have disabilities. A new law requires the special education department to expand its search for children ("Childfind") with disabilities to include birth to age 3, referred to as Part C under the federal, "Individuals with Disabilities Education Act" (IDEA). Prior to September, districts were only required to identify and serve children with disabilities ages 3 to 22, referred to as Part B under IDEA.

Part B has required school districts to identify, assess and provide a "Free Appropriate Public Education (FAPE)" to children who may qualify under one of several categories, including: developmental delay, mental retardation, hearing impairment, speech or language impairment, traumatic brain injury, specific learning disability, autism, emotional-behavioral disorder and others. Services can include

speech-language therapy, physical therapy, specialized instruction directed by a certified special education teacher, and other services and accommodations deemed necessary by the Individualized Education Program (IEP) team, which includes the parents.

Part C does not require the district to be the sole provider of services or to provide FAPE, like in Part B. It does, however, require district special education personnel to work with the county's Family Resource Coordinator (FRC) whose responsibility it is to see that families and providers work together. Children in this age bracket, birth to 3, have an Individual Family Services Plan (IFSP) rather than an IEP. Required services are not only paid for by state special education funding, similar to Part B, but also through the family's private insurance, Medicaid when the child is eligible, or some other funding source coordinated by the FRC.



Anyone can now refer any child suspected of a developmental delay or other disability, ages birth to 22, for evaluation to Mary Walker's special education department. Contact Scott Schell, Special Education Director and School Psychologist, or Melinda Colvin, Special Education Administrative Assistant, at 258-7357, for assistance.

2009-2010 School Year Calendar

Mary Walker School District #207

August

S	M	T	W	T	F	S
						1
2	3	4	5	6	7	8
9	10	11	12	13	14	15
16	17	18	19	20	21	22
23	24	25	26	27	28	29
30	31					

September

S	M	T	W	T	F	S
		1	2	3	4	5
6	7	8	9	10	11	12
13	14	15	16	17	18	19
20	21	22	23	24	25	26
27	28	29	30			

August

31st - Staff Orientation

September

1st - First Day of School
7th - No School, Labor Day

October

12th - No School, Consortium Day

November

3rd - End of 1st Quarter
4th-6th - Early Release (conferences)
11th - No School, Veteran's Day
25th - Early Release
26th-27th - No School, Thanksgiving

October

S	M	T	W	T	F	S
				1	2	3
4	5	6	7	8	9	10
11	12	13	14	15	16	17
18	19	20	21	22	23	24
25	26	27	28	29	30	31

November

S	M	T	W	T	F	S
1	2	3	4	5	6	7
8	9	10	11	12	13	14
15	16	17	18	19	20	21
22	23	24	25	26	27	28
29	30					

December

S	M	T	W	T	F	S
		1	2	3	4	5
6	7	8	9	10	11	12
13	14	15	16	17	18	19
20	21	22	23	24	25	26
27	28	29	30	31		

January

S	M	T	W	T	F	S
					1	2
3	4	5	6	7	8	9
10	11	12	13	14	15	16
17	18	19	20	21	22	23
24	25	26	27	28	29	30
31						

December

21st-31st - No School, Winter Break

January

1st - No School, Winter Break
18th - No School, M.L. King, Jr. Day
25th - End of 2nd Quarter
26th - No School, Inservice

February

S	M	T	W	T	F	S
	1	2	3	4	5	6
7	8	9	10	11	12	13
14	15	16	17	18	19	20
21	22	23	24	25	26	27
28						

March

S	M	T	W	T	F	S
	1	2	3	4	5	6
7	8	9	10	11	12	13
14	15	16	17	18	19	20
21	22	23	24	25	26	27
28	29	30	31			

February

15th - No School, President's Day

March

19th - No School, Consortium Day
24th-26th - Early Release (conferences)
29th - 31st - No School, Spring Break

April

S	M	T	W	T	F	S
				1	2	3
4	5	6	7	8	9	10
11	12	13	14	15	16	17
18	19	20	21	22	23	24
25	26	27	28	29	30	

May

S	M	T	W	T	F	S
						1
2	3	4	5	6	7	8
9	10	11	12	13	14	15
16	17	18	19	20	21	22
23	24	25	26	27	28	29
30	31					

April

1st-2nd - No School, Spring Break
8th - End of 3rd Quarter

May

31st - No School - Memorial Day

June

10th - Last Day of School, Early Release
11th & 14th - Snow Make-up (if needed)

June

S	M	T	W	T	F	S
		1	2	3	4	5
6	7	8	9	10	11	12
13	14	15	16	17	18	19
20	21	22	23	24	25	26
27	28	29	30			

July

S	M	T	W	T	F	S
				1	2	3
4	5	6	7	8	9	10
11	12	13	14	15	16	17
18	19	20	21	22	23	24
25	26	27	28	29	30	31

Adopted by Mary Walker School District #207 Board of Directors on June 17, 2009

Important Sports Information

It's never too early to start thinking about fall school sports. Remember, before you can participate in any of the sports you need to meet all the requirements that the Mary Walker School District requires of its athletes. This includes, getting a physical (physicals are now good for 2 years), and completing and submitting the following forms; insurance forms, athletic code, sports guide lines, sports warning and your medical card. Please see Tammy Ward in the middle school and Cindy Melville in the high school for all paperwork and return it to them when it is complete.

Some important dates to remember for this Fall:

August 17th ~ High School Fall Sports Meeting at 6pm in the Auditorium

August 19th ~ High School Football Starts

August 24th ~ High School Cross Country, Cheer, and Volleyball Starts

September 1st ~ First Day of School and M.S. Sports Starts



Charger Fall Sports Information

Parents and prospective high school football, volleyball and cross country players:

Welcome to Charger sports! Please note this information and important dates to kick off the fall season!

- Football Coaching Introductions:

Head Coach Mark Edwards 233-9399
Assistant Coach Dave Howard & Jeremy Hegel

- Volleyball Coaching Introductions:

Head Coach: Kim Gines 276-1034
Assistant Coach: Matt Gines

Cross Country Coaching Introductions: Hugh Franks 937-2023

- Eligibility: You must be ready to practice the first day! To be eligible, you must complete the athletic forms including a current physical, proof of insurance, (or purchase football/school insurance) and medical card. Incoming freshman need to have a complete physical.
- First Practice:

Football ~ Wednesday, August 19th
Volleyball ~ Monday, August 24th
Cross Country ~ Monday, August 24th
- Practice attire **for football**: Shorts and tee-shirt, football shoes and a mouth piece. An area will be provided for eating lunch during two-a-day practices.

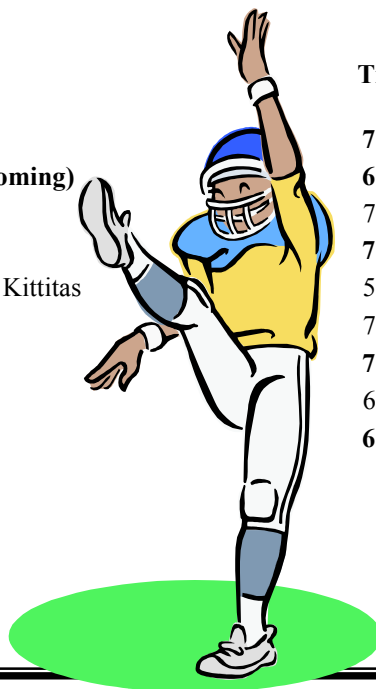
If you have any questions, please contact the High School at 258-4533
or the head coaches at the phone numbers listed above.

Schedules can change ~ please visit the website at www.marywalker.org for all the latest information!

2008 Charger's Football Schedule

(practice starts on August 19th)

Day	Date	Versus	Time	Departure time
Friday	09/11/09	Gar/Pal	7:00	NA
Friday	09/18/09	Republic (Homecoming)	6:00	NA
Friday	09/25/09	Davenport	7:00	4:30
Friday	10/02/09	Colfax	7:00	NA
Saturday	10/10/09	Tacoma Baptist @ Kittitas	5:00	1:00
Friday	10/16/09	Lind/Ritzville	7:00	3:00
Friday	10/23/09	Reardan	7:00	NA
Friday	10/30/09	Republic	6:00	2:30
Friday	11/06/09	Liberty	6:00	NA



Head Coach: Mark Edwards
Assistant Coaches: Dave Howard & Jeremy Hegel

2008 Charger's Volleyball Schedule

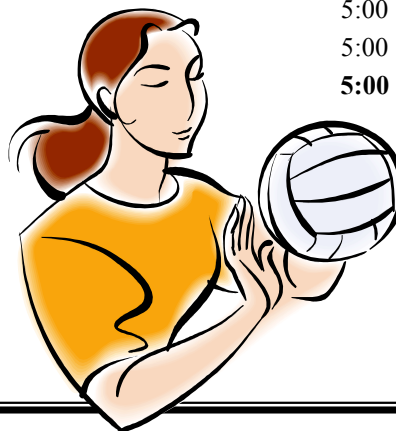
(practice starts on August 24th)

Day	Date	Versus	Time	Departure time
*Wednesday	09/16/09	Kettle Falls	5:00	NA
*Thursday	09/17/09	Chewelah	5:30	3:30
*Tuesday	09/22/09	Wellpinit	5:00	3:10
Tuesday	09/29/09	Hunters	5:00	NA
Tuesday	10/01/09	Republic	5:00	2:30
*Saturday	10/03/09	Colton	12:00	NA
Tuesday	10/06/09	St. George	5:00	3:00
Thursday	10/08/09	Curlew	5:00	NA
Tuesday	10/13/09	Inchelium	5:00	NA
Thursday	10/15/09	Wellpinit	5:00	NA
Tuesday	10/20/09	Northport	5:00	2:00
Tuesday	10/27/09	Cusick	5:00	2:30
Thursday	10/29/09	Selkirk	5:00	NA

1B/2B League Tournament @ St. George October 31st
2B District Tournament @ St. George November 5th & 7th
2B State Tournament @ Yakima November 12th - 14th

Head Coach: Kim Gines
Assistant Coach: Matt Gines

* Non-League Matches



2008 Cross-Country Schedule (practice starts August 24th)

Day	Date	Host	Time	Departure time
Saturday	09/05/09	NMC	11:00	TBA
Wednesday	09/09/09	Chewelah	TBA	TBA
Saturday	09/12/09	Silverwood Invite @ Couer d'Alene	TBA	TBA
Tuesday	09/15/09	League	4:00	NA
Tuesday	09/22/09	St. George's	4:00	2:00
Tuesday	09/29/09	Wellpinit	4:00	2:00
Tuesday	10/06/09	Curlew	4:00	1:00
Tuesday	10/13/09	Republic	4:00	1:00
Friday	10/23/09	Panorama League Meet	3:00	NA
Friday	10/31/09	Regionals @ Plant's Ferry	TBA	TBA
Saturday	11/07/09	State @ Tri-Cities	TBA	TBA

Coach: Hugh Franks

2008 Springdale Middle School Volleyball Schedule (first practice September 1st)

Day	Date	Versus	Time	Departure time
Wednesday	09/16/09	Valley	3:30	NA
Saturday	09/19/09	Cusick & Selkirk @ Cusick	10:00	8:00
Tuesday	09/22/09	Wellpinit	3:30	2:15
Saturday	09/26/09	Columbia & Cusick @ Valley	10:00	8:45
Tuesday	09/29/09	Valley	3:30	3:05 w/bus
Saturday	10/03/09	Columbia & Selkirk @ Wellpinit	10:00	8:30
Tuesday	10/06/09	Wellpinit	3:30	NA



2008 Springdale Middle School Football Schedule (first practice September 1st)

Day	Date	Versus	Time	Departure time
Thursday	09/17/09	Davenport	4:00	2:30
Thursday	09/24/09	Liberty	4:00	2:00
Thursday	10/01/09	Lind/Ritzville	4:00	NA
Thursday	10/08/09	Reardan	4:00	2:45
Thursday	10/22/09	TOR	4:00	NA
Tuesday	10/27/09	Colfax	4:00	NA



New High School Math Assessment in Place for Fall

It is very important that students be placed in the proper math class in high school so that they are appropriately challenged and so that they are on track to meet state standards and graduation requirements. To assist in proper placement, all incoming 9th graders will be given an assessment when they register for school in August. We'll also use teacher recommendations, course grades, and any available grade level assessments in determining proper placement.

Don't forget the importance of 'tuning up' your math skills before you take the assessment so that you don't come in 'cold'. Possible ways of brushing up on your math skills include:

ALEKS (ALEKS.com)

- Students enrolled in Springdale for 8th grade already have an ALEKS account that can be accessed from home, town computer center, county libraries, etc. (anywhere

there is internet access).

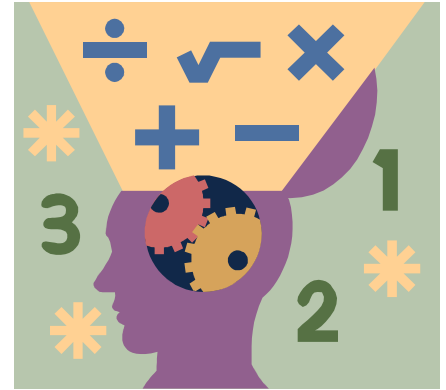
- If you do not have a current ALEKS account, you can browse to ALEKS.com and sign up for your own (but you will have to pay).

www.ccri.edu/math/Videos/New_Folder/arithmetic_review.htm

- This site includes audio-visual presentations of mathematical concepts—choose those that you need to review.
- Browse to the web-site and then select a topic by clicking on "Off Campus viewing"

Kuta Software (KutaSoftware.com) - No instruction but great practice which will be sufficient for many students. Go to Infinite Pre-Algebra (button on the left side).

- Free Worksheets
- For Algebra 1 Readiness, focus mostly on Basics, Number Theory,



and Arithmetic (and some Proportions and Percents).

Library books

See or talk to Mr. Kohlstedt at the high school about getting a review book.

Students hoping to register for Geometry should freshen their Algebra skills using books, ALEKS, or web-sites such as Purplemath.com

Mary Walker Receives Multiple Grants

Mary Walker School District has been awarded three outstanding grants:

The Gates Foundation awarded Mary Walker and Wellpinit school districts an "Early Learning Grant". The Gates grant was awarded to three districts in the State of Washington. This grant is to support districts in their effort to improve school readiness for children entering the K-12 system. These monies can be used for:

- Connecting early learning partners (Head Start, ECEAP, Daycare Providers, etc)
- Improving alignment between pre-school and elementary school
- Professional Development
- Travel
- Some temporary hiring

The Advanced Placement grant was awarded to ten high schools in our area – the nine consortium schools and Chewelah. These monies can be used for:

- Professional Training
- Travel
- Regional and National AP Conferences
- Curriculum
- PSAT/SAT tests for students
- On-line classes
- On-line College Board college guidance

The AVID grant, which was awarded early in the year, is a National Pilot grant with six local consortium schools to develop a "college going culture" for low economic non-college going his-

tory. These monies can be used for:

- Teacher training/Professional development
- Travel
- Curriculum
- License and fees for the AVID program

The guidelines of each grant direct the grant recipient how much to spend in what area(s). Every grant is designated funds and expenditures must follow the parameters of the grant. There will be some in-state and out-of-state training that will follow the directives and guidelines of each grant. These monies can only be used for these specifics and not for the day-by-day activities of a school district.

MARY WALKER SCHOOL DISTRICT NO. 207
2009–2010 Letter to Households ~ National School Lunch Program/School Breakfast Program

Dear Parent/Guardian:

This letter tells how your children can get free or reduced-price meals, as well as information on other benefits. The cost of school meals is shown below.

Breakfast will be served to those children who qualify for free and reduced-price meals at no cost. Lunches served to children who qualify for reduced-price meals in kindergarten through 3rd grade will be made available at no cost. All other students (preschool and 4th – 12th grades) will be charged the rate shown below.

Grade Level	REGULAR			REDUCED-PRICE			
	Breakfast	Lunch	n/a	Breakfast	Lunch		n/a
					K-3	All Other Students	
Pre-5	\$0.75	\$1.25	\$	\$ -0-	\$ -0-	\$0.40	\$
6-12	\$0.75	\$1.50	\$	\$ -0-	\$ n/a	\$0.40	\$

All meals meet federal food guidelines. Students who are identified as disabled by their doctor may need different foods. These substitute foods will be made available at no extra charge. If your child needs this assistance, please contact us.

WHO SHOULD FILL OUT AN APPLICATION?

If your total household income is the SAME or LESS than the amount on the chart or you receive Basic Food, take part in the Food Distribution Program on Indian Reservations (FDPIR), receive Temporary Assistance for Needy Families (TANF) for your children or are applying for a foster child, fill out the application. Return the application to your child's school or to the district office. **Be sure to submit ONLY ONE application per household.** A foster child is considered a family of one. We will notify you if the application is approved or denied.

INCOME CHART Effective from July 1, 2009 to June 30, 2010					
Household Size	Annual	Monthly	Twice Per Month	Every Two Weeks	Weekly
1	\$20,036	\$1,670	\$ 835	\$ 771	\$ 386
2	26,955	2,247	1,124	1,037	519
3	33,874	2,823	1,412	1,303	652
4	40,793	3,400	1,700	1,569	785
5	47,712	3,976	1,988	1,836	918
6	54,631	4,553	2,277	2,102	1,051
7	61,550	5,130	2,565	2,368	1,184
8	68,469	5,706	2,853	2,634	1,317
For each Additional member add:	+6,919	+577	+289	+267	+134

Look at the chart. Find your household size. Find your total household income. If members in the household are paid at different frequencies and you are unsure if your household is eligible, fill out an application and we will determine your income eligibility. The information you give will be used to determine or prove your child's eligibility for free or reduced-price meals. This information may also be used for other state or federally funded school related benefits.

Foster children MAY be eligible for free and reduced-price meals regardless of your income. Each foster child needs their own application. If you have questions about applying for meal benefits for foster children, please contact us.

HOUSEHOLD is defined as all persons, including parents, children, grandparents, and all people related or unrelated who live in your home and share living expenses. Do not include foster children.

HOUSEHOLD INCOME is considered to be the income each household member received before taxes. This includes wages, social security, pension, unemployment, welfare, child support, alimony, and any other cash income.

WHAT MUST BE ON THE APPLICATION?

For a family getting Basic Food/TANF/FDPIR:

- Child's name
- Basic Food, TANF, or FDPIR case number
- Adult household member's signature

For a foster child:

- Child's name (one per application)
- Child's personal use income
- Adult's signature

For households not getting Basic Food/TANF/FDPIR:

- Child's name
- Names of all household members
- Income by source for all household members
- Adult household member's signature
- Social security number of the adult household member who signs the application, (or check the "I do not have a social security number" box if the adult signing does not have a social security number)

DEPARTMENT OF SOCIAL & HEALTH SERVICES MATCH

The Department of Social and Health Services (DSHS) will download the names of all children age birth to 20 into the Office of Superintendent of Public Instruction (OSPI) Core Student Record Database. Information will include the child's first name, last name, middle initial, and date of birth. Upon receipt of this information, OSPI will match student names against the DSHS file and then make the "match" data available to each district via the Internet. Students will automatically qualify for free meals if their schools participate in the U. S. Department of Agriculture (USDA) Child Nutrition Programs. Households that do not want their child(ren) to participate in the free meal program should notify the child(ren)'s school.

BASIC FOOD – FIND OUT IF YOU QUALIFY

Basic Food is the state's food stamp program. It helps households make ends meet by providing monthly benefits to buy food. Getting Basic Food is easy! You can apply in person at the local DSHS Community Service Office, by mail, or online. You may qualify for Basic Food even if you do not qualify for Free or Reduced-Price lunch because Basic Food eligibility goes up to 200 percent of the Federal Poverty Level, whereas the National School Lunch Program

Continued on next page...

MARY WALKER SCHOOL DISTRICT NO. 207
2009–2010 Letter to Households ~ National School Lunch Program/School Breakfast Program

stops at 185 percent. And, if you qualify for reduced-price lunch, you should apply for Basic Food because your children may be automatically eligible for free meals at school. There are other benefits too. You can learn about Basic Food by calling 1-877-514-FOOD or by logging on to http://www.foodhelp.wa.gov/basic_food.htm.

FREE OR LOW-COST HEALTH INSURANCE

If you would like free or low-cost health insurance for your children, call Apple Health for Kids to request an application: toll free 1-877- 543-7669. The health coverage may include doctor visits, prescriptions, hospital, dental care, eyeglasses and more. You may also find information or print an application at their website: <http://hrsa.dshs.wa.gov/applehealth/index.shtml>. Call or log-on today to receive more information.

PROOF OF ELIGIBILITY

The information you provide may be verified at any time. You may be asked to send additional information to prove your child is eligible to receive free and reduced-price meals.

FAIR HEARING

If you do not agree with the decision on your child's application or the process used to prove income eligibility, you may talk with **Kevin J. Jacka**, the fair hearing official. You have the right to a fair hearing which may be arranged by calling the school/school district at this number **509-258-4534**.

REAPPLICATION

You may apply for benefits any time during the school year. If you should have a decrease in household income, an increase in household size, or become unemployed, or receive Basic Food, TANF, or FDIPIR, you may be eligible for benefits and may fill out an application at that time.

NONDISCRIMINATION

The U.S. Department of Agriculture (USDA) prohibits discrimination in all its programs and activities on the basis of race, color, national origin, age, sex, or disability. Persons with disabilities who require alternative means for communication of program information (Braille, large print, audiotape, etc.) should contact USDA's TARGET Center at (202) 720-2600 (voice and TDD).

To file a complaint of discrimination, write USDA, Director, Office of Civil Rights, 1400 Independence Avenue SW, Washington, DC 20250-9410 or call (800) 795-3272 or (202) 720-6382 (TDD). USDA is an equal opportunity provider and employer.

Applications for the Free and Reduced Lunch Program are available at the District Office and will also be sent home with students during the first week of school. You may also find an application online at www.marywalker.org under the *Our District ~ General Information* menu.

Mary Walker High School Dress Code

The business of school is education and proper dress is an important responsibility we must all accept. The aim is not conformity, but good taste. Wearing clean clothes neatly is a reflection on your character and on the school. Student dress and personal appearance should not disrupt or distract from the learning environment. *Students who violate the dress code will not be allowed to attend classes until their apparel conforms to school standards.* The following items are **not** allowed:

- Skintight (**form revealing**), sagging, low-cut, suggestive see-through, or revealing clothing
- Bare midriff tops (**no midriff should be seen standing or in the sitting posture**) or short skirts/shorts

(**no more than 5" measured above mid-knee when kneeling**) **Note: Exception may be made for school athletic uniforms i.e. cheerleading**

- Clothing or hats with writing and/or graphics that are obscene, profane or suggestive, indecent slogans, pictures that show violence or drug related characters, or advertising alcohol, drugs, or tobacco, are prohibited. Hats are not allowed to be worn in the classroom during school hours or during cafeteria use. Hats are not allowed during school assemblies in the gym or auditorium. Hats may be worn in the hallways during school hours and outdoors.
- Chains or other potentially dangerous items
- Any gang-related clothing or sym-

bols; i.e. bandanas, colors, etc.

- Headgear (i.e. hats, caps, headbands, bandanas, hairnets, do-rags, etc.), and sunglasses are not to be worn in class.
- Sleeveless muscle shirts, fishnet shirts, tank tops, spaghetti straps (**all sleeveless shirts must have 'four-finger' width at the shoulder**), bike shorts, sleepwear, or undergarments
- No sleepwear (i.e. flannel pajama pants, slippers, etc.)
- Any other attire or grooming that is perceived by the administration as being detrimental to the educational process will not be allowed (colored hair, face glitter, etc.)

MARY WALKER SCHOOL DISTRICT, NO. 207

P.O. Box 159
500 North 4th Street

District Office

Superintendent-Kevin Jacka
509-258-4534

High School

Principal-Matt Cobb
509-258-4533

Elementary-Mid School

Principal-Cheryl Henjum
509-258-7357

Postal Patron
Box Holders
Rural Routes
General Delivery

Non-Profit
Organization
U.S. Postage

PAID

Permit #1
Springdale, WA

ECRWSS

Mary Walker School District No. 207 (Springdale, WA) is an equal employment opportunity employer and does not discriminate against any employee on the basis of race, color, creed, age, sex, marital status, national origin or the presence of any physical or mental disability.

Message From Our Superintendent

August is here and that means we are beginning to “think school”. The first day for students will be September 1st.

We’re happy to have our 560 students returning to school, and a special welcome to the new students joining our school neighborhood. We want your student to be happy and successful in the Mary Walker School District, and believe that you play a key role. That role is to continually show interest in and support your students. The student who knows that his or her family is interested in and supports the school program will almost always enjoy greater success.

The road ahead for the Mary Walker School District is one of excitement as well as caution. School districts are a reflection of our society, and the turmoil that our nation is going through economically ultimately impacts the educational system as well. Our promise to our constituents is to continue to be good stewards of the resources you have given us and to be diligent in continuing to find ways to be more efficient as an organization. Your partnership with the District is critical to our success with our students.

We encourage any one who may be interested in the Mary Walker School District to contact either Jerry Dyar or Matthew Cobb at the High School, 258-4533; or Cheryl Henjum or Tammy Ward at the Elementary/Middle School, 258-7357; or Kevin Jacka at the District Office, 258-4534.



Kevin Jacka, Superintendent