



District Implements Honeywell Instant Alert System

The Mary Walker School District knows that keeping parents informed and involved helps to assure student safety and improve student success. With today's on-the-go lifestyles, it has become more difficult for schools to reach families quickly and effectively. This is why our district has decided to implement a new system called Honeywell Instant Alert[®] for Schools.

Instant Alert for Schools is an essential tool for notification and communication. Within minutes of an emergency, school officials can use Instant Alert to deliver a single, clear message to the students' parents or guardians by telephone, cell phone, e-mail, pager or PDA. Instant Alert can also be used to notify you of a school closing due to inclement weather. It's an equally effective way to keep you informed of everyday activities, such as event times and

locations as well as schedule changes.

As parents, you do not need to do a thing to enroll in this service. All of the contact information you have already provided to the school will be used for sending you alerts. However, it is vital that the school has accurate and complete information to prevent miscommunication, so please contact the offices with any changes or updates.

The system will be ready for us to use by the second week of November. We will be sending our first test alerts around that time. Be sure to set your e-mail spam filter to receive e-mail from Honeywell.com. We hope you enjoy the new service!

If you would like more information on Honeywell Instant Alert, please visit the School Closure Information page of the district website at www.marywalker.org.

Mark Your Calendar

- November 4th-6th ~ Early Release for Parent-Teacher Conferences
 - November 11th ~ No School - Veteran's Day
 - November 25th ~ Early Release
 - November 26th & 27th ~ No School - Thanksgiving Break
 - December 21st - January 1st ~ No School - Winter Break
 - January 18th ~ No School - Martin Luther King Jr. Day
 - January 25th ~ End of Semester
-

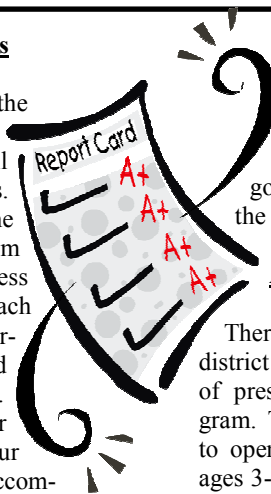
News from Mrs. Henjum ~ K-8

Parent Teacher Conferences

On November 4th and 5th the Springdale Elementary/Middle School will host fall Parent Teacher Conferences. Parents are invited to come and visit with the classroom teacher and see the progress that their child is making. Each classroom teacher has arranged a specific time and day for your conference. Please mark your calendar for this important event! Your child has many wonderful accomplishments to share with you during your visit.

Book Fair

The Springdale Elementary/Middle School will host the Scholastic Book Fair on November 4th – 16th in the elementary library. The fair will be open during school hours (8:30 – 3:00) with the following exceptions:



November 4th – 9:00 to 4:00pm
November 5th – 9:00 to 7:00pm
November 6th – 9:00 to 12:00pm

All proceeds from the Book Fair will go toward purchasing new books for the school library.

Additional Preschool Session

There is exciting news to share!!! The district is going to be adding another section of preschool to our already existing program. The additional section will allow us to open more preschool spots for students ages 3-5. The new section will use the same schedule, curriculum and have a similar style to the program that already exists. The district is very excited that we are able to offer more preschool spots to our community members with small children. We hope to open the new preschool section before the 1st of the year. Please look for more information to come in future newsletters!

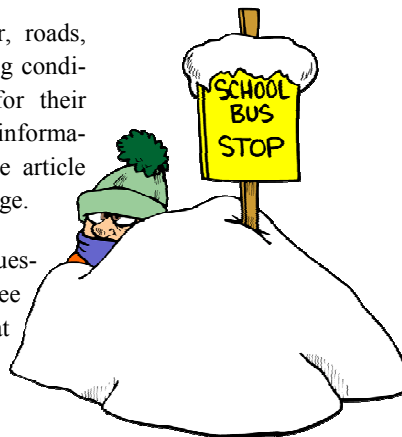
Weather Related Late Start Information

In the event that the Mary Walker School District has a two hour late start and the Valley School starts on time, students may ride their regular bus to Springdale. They will then be supervised in our cafeteria until school starts.

Parents need to know that they have a choice if they

decide the weather, roads, bus stop, or walking conditions are unsafe for their students. For more information, please see the article on the following page.

If you have any questions, please feel free to call the school at 258-4534.



Preparing for School Closures

Mary Walker School District's School Closure Procedure is in place to ensure the safety of students and staff in the event of an unexpected school closure. The plan includes several elements that are important for parents to be aware of.

First, an emergency plan for all students must be on file in the event that it is necessary to close school early. We would like to know where your child should go in case of an emergency or unexpected school closing. Cause of an emergency school closure may include an extended electrical outage, gas line leak, interruption of water or sewer service, or severe weather conditions.

Checking the safety of the students' route to school is especially important in winter because weather in Northeast Washington can be quite challenging! Parents need to know that they have a choice if they decide the weather, roads, bus stop, or walking conditions are unsafe for their students with consideration for the students' maturity level and cloth-

ing.

The expectation in the Mary Walker School District is to hold school every day that we can safely transport students and that our staff can safely get to work. However, parents are in the best position to make a judgment as to whether or not to send their children to school based on weather conditions in their specific locale. If parents believe it is too cold or too dangerous for their children to walk, be driven, or drive to school, they certainly have the option to keep their children home.

When weather and road conditions are a concern, we gather informa-

tion from different sources to decide if it is safe to transport our students to and from school. Our first concern is the safety of students and staff. Our school buses are well-equipped for winter conditions and our drivers are trained to drive in all kinds of weather. We do know that it is safer for students to ride the bus than to drive themselves to school, so we encourage beginning drivers to take the bus when road conditions are poor.

If the decision is to close schools, that information is given to the media, so please tune in to your local TV or radio stations to be kept up to date. You will also be notified by telephone and email through the Honeywell Instant Alert system if you have provided accurate and current information to the schools. (For more information about the Honeywell Instant Alert system, please see page 1)



Mary Walker High School Open House

On November 18th at 6:30-8:00 pm, Mary Walker High School will have its annual Open House and College Dessert Night! Parents and students are invited to attend this fun and informative evening by beginning with a delicious ice cream dessert in our cafeteria, followed by some



fun pictures of what kids are doing this year at MWHS.

Parents and students will then move to their child's advisory class for activities that should be fun and enlightening. The evening will conclude in the high school square for

our "mini-college fair." This is a worthwhile evening that is designed to be informational as well as plain pure fun.

So, please come and join us for our annual Open House and College Dessert Night on November 18th at 6:30-8:00 pm. We look forward to seeing you there!

Middle School Math Up and Running

Middle school math is up and running. We are working hard to brush off and solidify all the concepts that were learned in the years leading up to middle school.

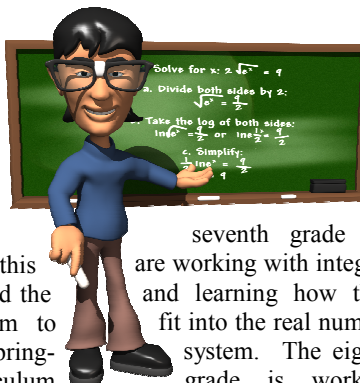
If you have a student in Springdale Middle School, ask them about their nine square practice books. They are using them to review and practice all those basic skills that are the foundation we build on to reach higher levels of math. So much depends on these skills that we are taking some time to be sure we have a solid foundation.

Quiz your student on their multiplication tables or give them a division problem to solve. These may seem like

really basic skills but they are the skills that are critical to solving quadratic equations or working with polynomials.

We have new books this year. We have added the SpringBoard program to our math classes. SpringBoard is a curriculum designed by the CollegeBoard and is their official pre-AP program. It has just been revised and will help prepare our students to be successful in high school and beyond.

Currently we are studying about factors and divisibility rules in the 6th grade, getting ready to work with fractions and decimals. In



seventh grade we are working with integers and learning how they fit into the real number system. The eighth grade is working with exponents and studying patterns and numerical relationships. We will be moving into working with algebraic equations soon.

Maybe you would like to come in and visit the math classroom to see in person what our students are doing.

Pandemic Flu Policy & Procedure

Faced with warnings of an impending influenza pandemic, school districts across the nation are formulating emergency response plans for a potential health crisis. With a plan in place, a district gains the crucial ability to sustain itself through a pandemic situation if one occurs. The Mary Walker School District No. 207 does have a preparation, response and recovery plan to be used in case of a pandemic flu. The complete plan is posted at www.marywalker.org.

EMERGENCY PREPARATIONS, RESPONSE, RECOVERY

What is the flu?

Flu, also called influenza, is a contagious disease of the lungs and airways. Usually influenza viruses are spread in droplets of cough and sneezes.

Flu Symptoms:

Fever	Headache	Runny Nose
Body Aches	Cough	Stomach & Intestinal Discomfort
Extreme Tiredness	Sore Throat	

How does seasonal flu differ from Pandemic Flu?

Seasonal Flu:

Pandemic Flu:

- Occurs every year usually in the winter.
- For most people, it is an unpleasant but not life-threatening infection.
- Affects up to about 10% of the population.
- Annual vaccination is available for those at risk of serious illness.

- Occurs rarely (three times in the 20th century).
- It could be a more serious infection for everyone.
- May affect around 25% of the population.
- Vaccine probably would not be available in the early stages of the pandemic.

According to the Washington State Department of Health, an epidemic is an outbreak of a disease that occurs in one of several limited areas, like a city, state, or country. Once the disease spreads beyond the borders of several countries and affects many countries across the globe, it is called a pandemic. In the 20th century, several pandemics of influenza occurred – the biggest one in 1918. During that pandemic, at least 500,000 Americans died and it has been estimated that there were as many as 10 million deaths worldwide.

In the case of a pandemic flu event, the Mary Walker School District No. 207 will follow the District's Infectious Disease Policy, Board Policy No. 3414 (please visit our website to view this policy).

It is anticipated that Tri-County Health Department will make the determination when to close schools and businesses. The district will support their decision-making process by providing the same reporting of absences as stated in the Infectious Disease policy. Different forms of communication will be used to keep staff, students, and parents informed of announcements and plans from the Tri-County Health Department and plans for the district's response if the pandemic should affect Mary Walker School District No. 207. These include announcements through our website, the local media and the Honeywell Instant Alert system.

You Have to Have a Theme!

Middle school students like big ideas. They enjoy thinking about their own lives and things around them. Because this is true, the Language Arts curriculum is organized around themes. The themes begin with a close look at personal lives and move to text of various kinds and then out into the community and wider world.

The sixth grade is taking a look at changes. We began the year by analyzing changes in student's own lives. They have made lists, charts, narratives and posters of themselves and how they have changed since 1st grade and since 5th grade. They have discovered that they have changed physically but also in terms of knowledge, attitudes, responsibility and interests. As the year moves on the 6th grade will continue explor-

ing changes in themselves, in characters, in communities, and in the wider world.

In the 7th grade it is all about choices and consequences.

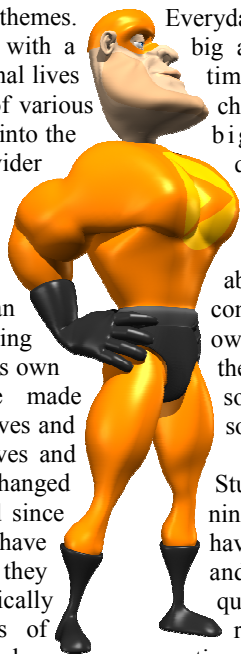
Everyday brings choices big and small. Sometimes the small choices have the biggest consequences. Currently the 7th grade students are writing narratives about a choice and consequence in their own lives. Some of these are humorous, some poignant and some very serious.

Students are beginning to see that they have many choices and that consequences are very real. As they continue with this topic they will move to character's choices and on to real world choices and conse-

quences such as environmental issues and advertising.

Challenge is the 8th grade theme. We all face challenges everyday. Currently the 8th graders are exploring what heroes do when challenged. After looking at film heroes and everyday heroes, students are arriving at a definition of what a challenge is and how it defines a hero. Their first big assessment is a definition essay of what a hero is. Throughout the year students will continue to explore the idea of challenges and how meeting them defines a person and a nation.

Having these big themes helps students to see themselves and the larger world around them. It ties ideas, strategies, texts, and writing together and makes them better readers, writers, and thinkers.



Check out the Mary Walker School District Website for the latest news, sports schedules, breakfast and lunch menus, and upcoming events. Be sure to register to receive important e-Alerts and much, much more!

www.marywalker.org

Mobile Science Lab Visits Middle School

The Seattle Children's Hospital has built a mobile science lab and we were pleased that it came to Springdale. Students in 7th and 8th grades were treated to a presentation and activities designed to learn about the separation of DNA for analysis.

The question that students were to investigate was what particular food at a food fair caused an outbreak of food poisoning. Students used micropipettes to transfer small amounts of material into tiny wells on a gel plate. The plate was then subjected to 270 volts of DC current for twenty minutes and the DNA separated by size.

As the various pieces sepa-

rated they formed a distinctive pattern known as a DNA fingerprint. Since DNA is invisible to the eye, a dye was used to illuminate the sample. In order to see the dye, a black light was used and a camera took a picture. It was clear to everyone what

the cause of the outbreak was. Students then learned what the top ten causes of food poisoning are. The students asked good questions and were very busy during the ninety minute presentation.



News from the Superintendent

I believe in a lot of ways the children of our community have been fortunate. Historically, our community has provided for its children in ways that clearly demonstrate concern for their well-being and personal development. The Springdale area has invested in its youngest residents, and evidence is found in everything from quality local schools, to playgrounds, to the community center. In most towns, the prominent role of children is unmistakable in parades, youth leagues, and social and religious organizations. Thumb through the local newspapers and you will see all the articles that center on the activities and accomplishments of youngsters.

In some communities children are considered a liability and not an asset. You can find community developments that allow pets, but don't allow children. In the southwest, I have heard about retirement communities that don't allow children, or

they prohibit school-age children from being outside after sunset. They have no public schools and they have made it clear that the proper place for children is somewhere else.

It is different here, where our students go on outings to the Lucky Duck Pond, there are street signs that advise people to drive slowly because our children may be playing and our students are supported very well at school extra-curricular activities. These are constant reminders to all that our community cherishes its youngest citizens.

With another difficult budget year before us, I remain confident our voters will continue to support the services and opportunities that have made the Springdale area a place that considers children an asset to the community.

Kevin Jacka, Superintendent